

This is

TAMK TAMPERE UNIVERSITY
OF APPLIED SCIENCES

TAMK TAMPERE UNIVERSITY
OF APPLIED SCIENCES

Profile



TAMK is a multidisciplinary and international university of applied sciences which focuses on promoting wellbeing and health, business and production as well as learning and creativity.



Schools & number of students

- Art, Music and Media 900
- Business and Services 2000
- Construction and Electrical Engineering } 3600
- Industrial Engineering }
- Health Care } 2400
- Wellbeing and Social Services }
- Vocational Teacher Education 400



Three responsibilities

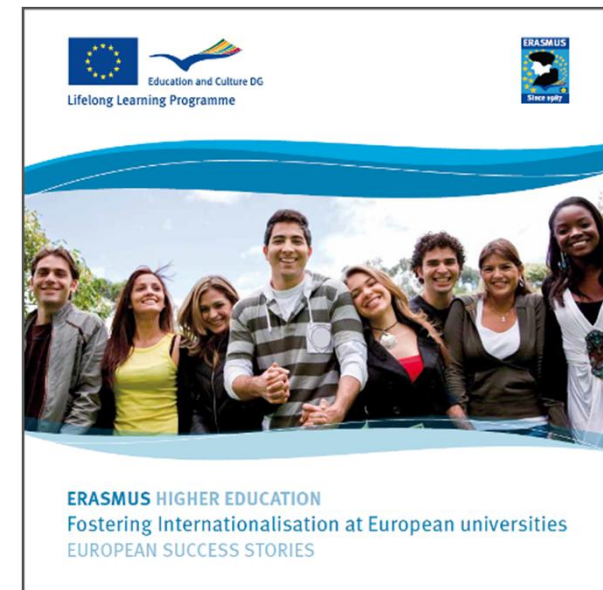
for Finnish universities of applied sciences

- education
- related research and development
- regional development

- studies at the universities of applied sciences give the students an excellent combination of theory and practice

350 international exchange partners in 50 countries

- student and staff exchanges
- international weeks
- intensive programmes
- international projects and networks





Vision

TAMK offers keys to success by creating new and international expertise.

Mission

With its multidisciplinary approach and strong orientation to working life, TAMK promotes the success and development of a wide range of professional fields.

research & development



- The focus is on the use of best methods and technologies to solve practical development needs
- Multidisciplinary solutions are developed to meet the changing needs of enterprises and the society
- Long-lasting partnerships with partners (companies, public sector, third sector)
- Presence of teaching staff and students at the locations where partners operate
- Constant dialogue and interaction leading to identification of real development needs
- Integration to education is essential

projects



MaLog

- Good mathematical skills help develop the logical and critical thinking skills necessary for good design and implementation of software and technology products.
- The project addressed this growing need for new learning materials and teaching resources for mathematical logic.
- The project produced theoretical and practical tutorial material in mathematical logic, including practice assignments, visualizations and simulations.
- It makes an individual adaptive learning path available for each learner.
- The learning materials include practical examples of systems that demand logical reasoning, such as the management of traffic lights at street intersections, the logic of railway points, and alarm systems for safety belts.
- The project got funding from the EU Lifelong Learning Programme.
- www.malog.org

projects



Active Ageing in Tampere Region

- Enrichment of elderly care work and reinforcement of knowledge and competences in municipalities and in organisations offering senior and elderly care services in Tampere Region.
- The project was based on co-learning and development model in which elderly people as well as elderly care professionals, students and teachers work in genuine living lab environments.
- New innovative operation models include good practice in fall prevention, incentive and activation groups such as Favourite Music for Older Persons and Elderly Men Homely in Kitchen and Senior PC pilot.
- The project was funded by the European Social Fund (ESF).
- <http://www.tamk.fi/web/aip.nsf>

projects



Varustamo

- The project develops peer counselling model using social media to support young people in their educational and career choices.
- The main target group is 16-25 year old who have finished or finishing comprehensive school, upper secondary school or vocational education.
- Another target group is young people who are in the verge of dropping out from education.
- Peer counselors are young themselves and offer tutoring and support by sharing experiences and provide information about services available.
- Peer counseling takes place mainly within social media via Facebook, chat room, twitter and blog-writings.
- The interaction between peer counselors and youngsters is based on openness, mutual trust and equality.
- The project is funded by European Social Fund (ESF).
- <http://varustamo.projects.tamk.fi/in-english/>

R&D
at TAMK

THANK YOU!

More information:

Perttu Heino

perttu.heino@tamk.fi

R&D Director, PhD

Tampere University of Applied Sciences

Tampere, Finland

www.tamk.fi

Tel +358 50 4012 168



TAMPERE UNIVERSITY
OF APPLIED SCIENCES

TAMK TAMPERE UNIVERSITY
OF APPLIED SCIENCES