

Together We Will See Further



**Tampere University Hospital
Tampere, Finland**

Total production of 44 631 services in 2015

41 414 Outpatient visits

9 300 Referrals

6 882 Surgical operations

5 967 Eye injections given by nurses

5 275 Cataract operations (39 % both eyes simultaneously)

476 Retinal operations

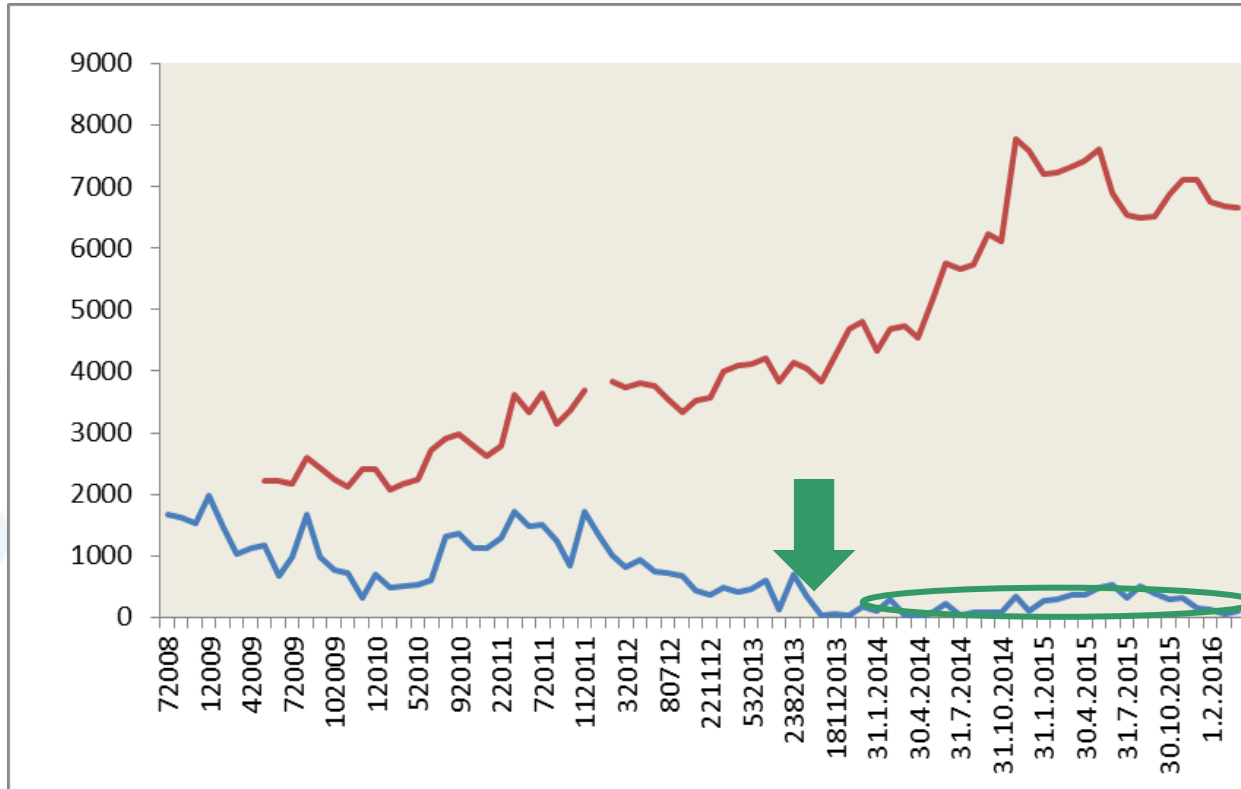
220 Glaucoma operations

20 Physicians

69 Other professionals

15 Multidisciplinary Teams

Tays Eye Centre Outpatients



**4-fold increase
2009-15**

**Appointments
on time**

Patients on appointment list

Overdue appointments



Tays Eye Centre Strategy / Main Principles

Prioritization

- Most resources allocated to prevent permanent visual disability

High Volume, Good (High Enough) Quality, Low Cost Services

- Segmentation
- Standardization
- Efficient ways to produce services

Shared care

- Physicians, nurses, optometrists, secretaries, technicians
- Patients

Is the intervention cost-effective?

Is the task necessary = beneficial to the patient?

If not, we should not do it.

If yes, who should do it?

Distribution of work among health care professionals, e.g.:

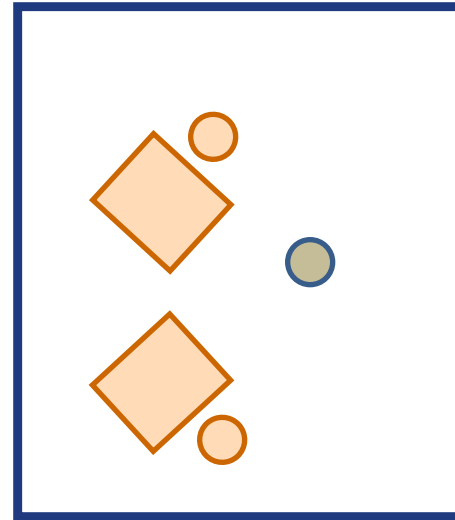
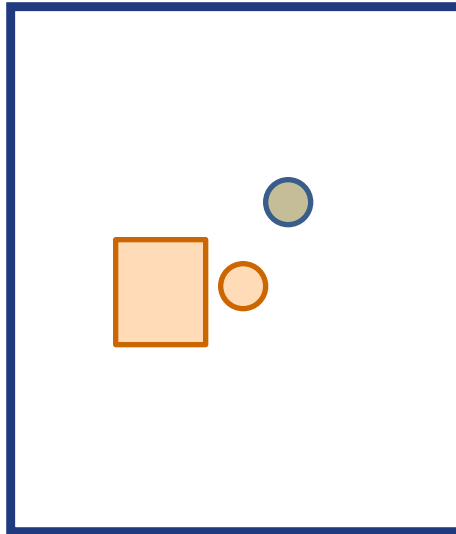
- **Eye injections given by nurses since 2010**
 - **Patients in 10 minute intervals**
- **Automated tests taken by technicians**
 - **Visual fields, visual acuity, eye pressure**

Efficient ways to produce services

One patient
One nurse
One perimeter



Two patients
One technician
Two perimeters



- Nurse and optometrist clinic
- -> Virtual patients seen by ophthalmologists (up to 50-100 patients / day)

Prioritization order by all Finnish Chief Ophthalmologists to the Ministry of Health

Age-related macular degeneration

1 cause of visual disability in the elderly

Glaucoma

2 cause of visual disability in the elderly

Retinal diseases, including diabetic retinopathy

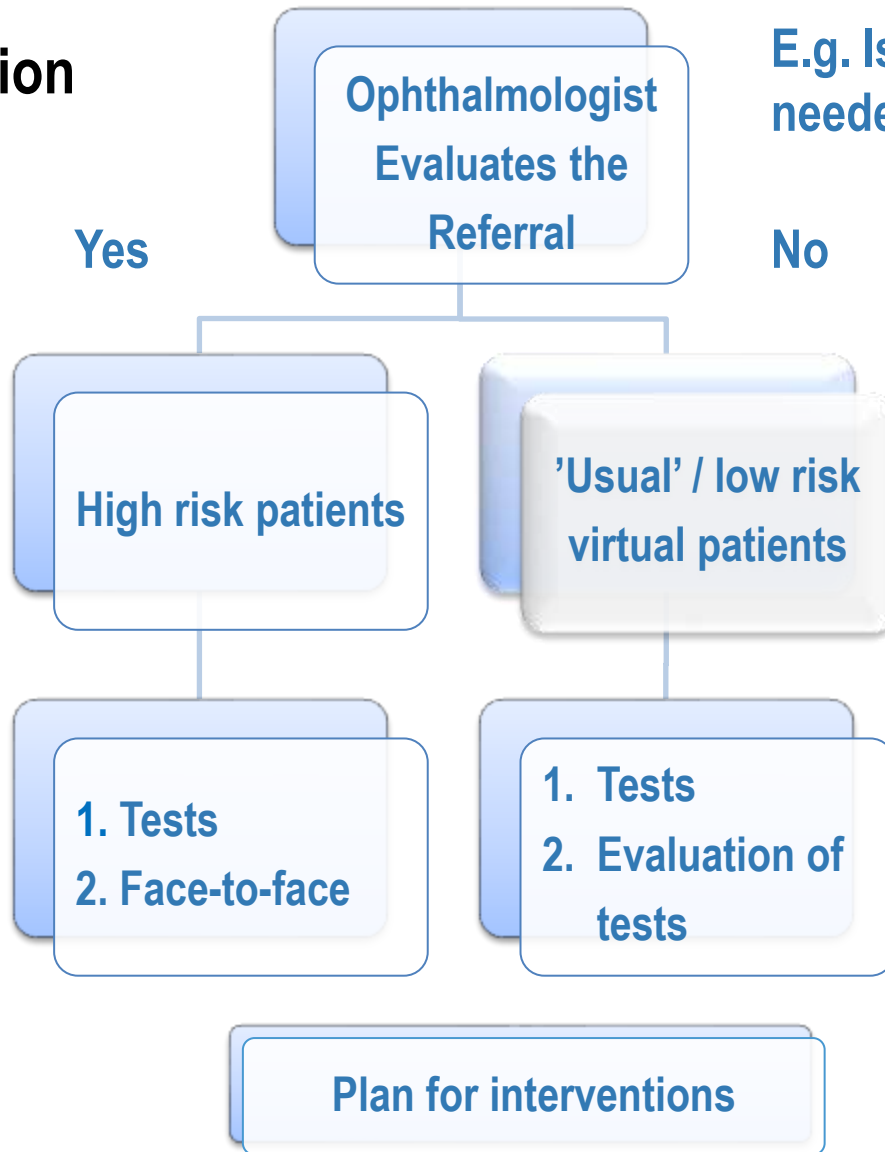
1 cause of visual disability at working age

Cataract

No *permanent* blindness

Based on the risk of permanent visual disability also in all other eye diseases

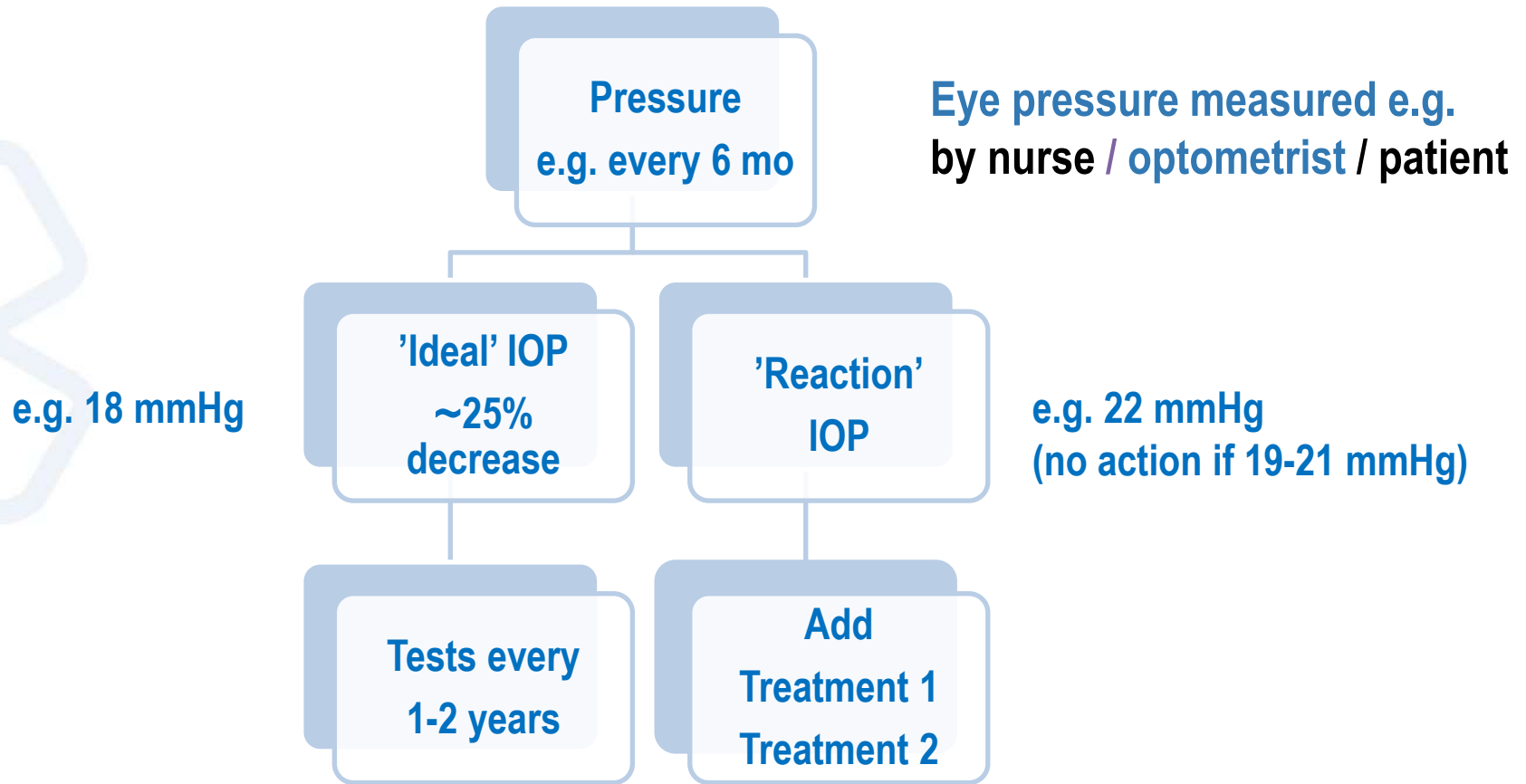
Segmentation



E.g. Is a face-to-face exam needed for proper diagnosis?

Standardization (e.g. stable glaucoma)

2-year plan

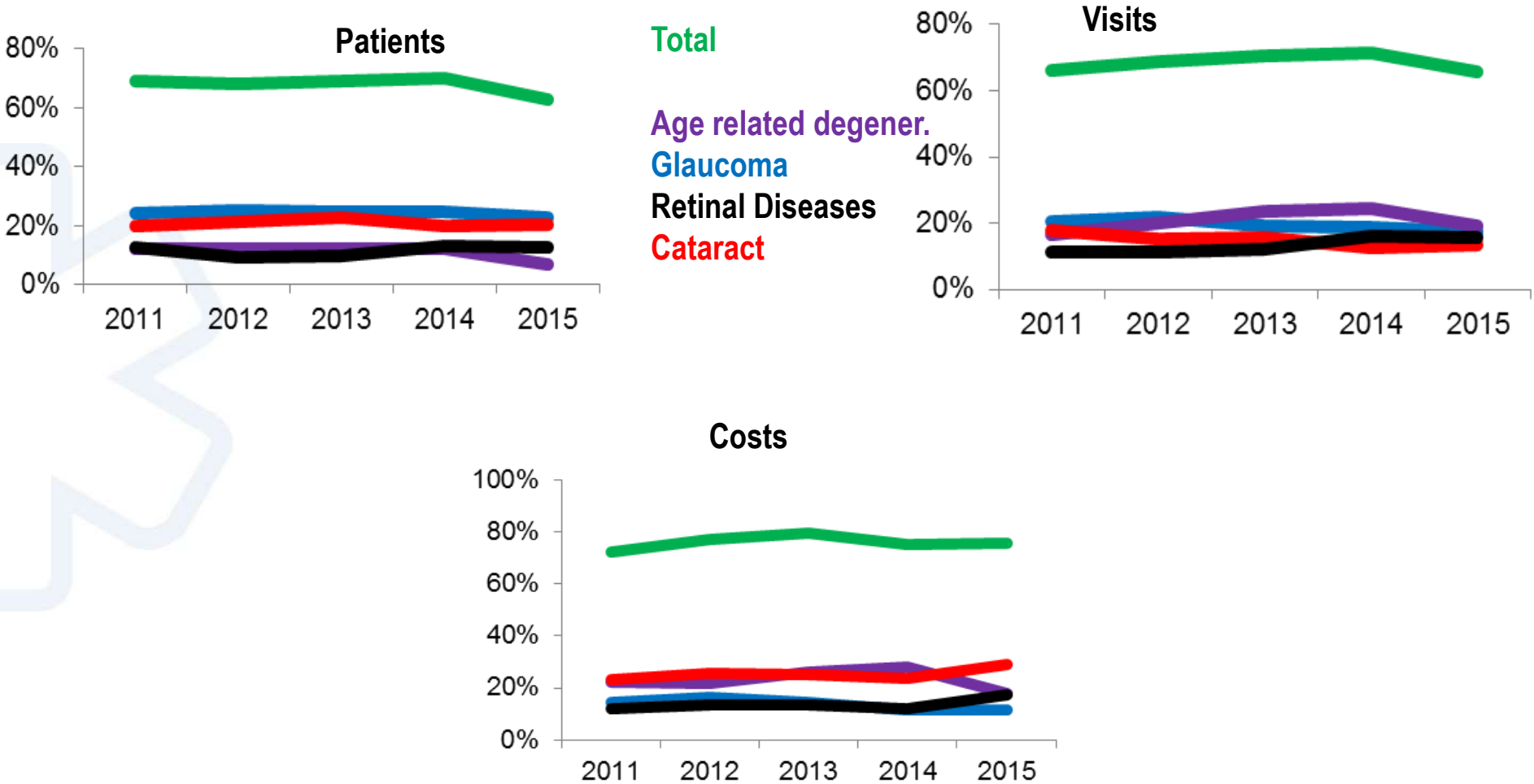


FinEBM Guide Line 2014



The 'Big Four' Eye Disease in Tays in 2011-15

~ 70 % of the total patients, visits and direct costs



Together We Will See Further



Right Services to Right Patients at Right Time in Right Setting

