



TAMPEREEN KAUPUNKI

Future plans for Kauppi Kampus

Educational Welfare Center (EWC)

3 rd Nov. 2016

Jarkko Lumio



Basic structure of the Finnish Social and Health Care System

Municipalities have responsibility to offer health care services to their residents. Provided by municipal **health care centres** (160) (Primary Health care Act, 1972)

- 12 Health Stations, a Hospital and many small units eg. school nurses maternity clinics exc. in Tampere

Secondary health care is provided by **regional hospitals** (Health Care Districts, municipal federation)

University teaching hospitals makes up the tertiary level. These contain the most advanced medical equipment and facilities and they are located in the major cities (Helsinki, Tampere, Oulu, Turku and Kuopio). All these five cities have a medical faculty.

All levels are **funded by municipality taxes**, but national government meets the cost of medical training.

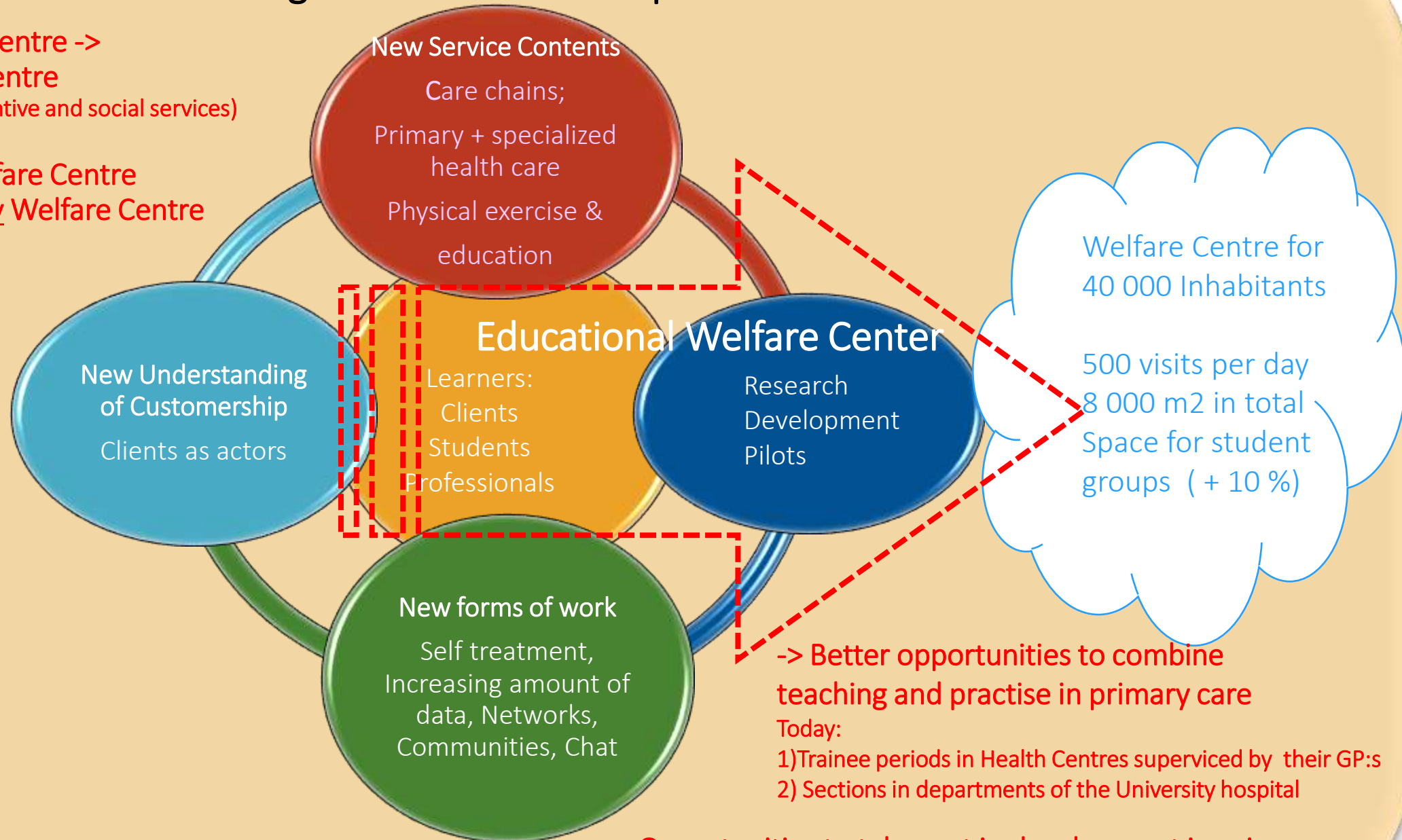
Change in 2019: 18 Districts for organizing Social and Health care services, funded by the state

EWC = Teaching + Practise + Development + Innovation

Health Care Centre ->
Welfare Centre

(more holistic approach; preventive and social services)

Educational Welfare Centre
Educational University Welfare Centre



-> Better opportunities to combine teaching and practise in primary care

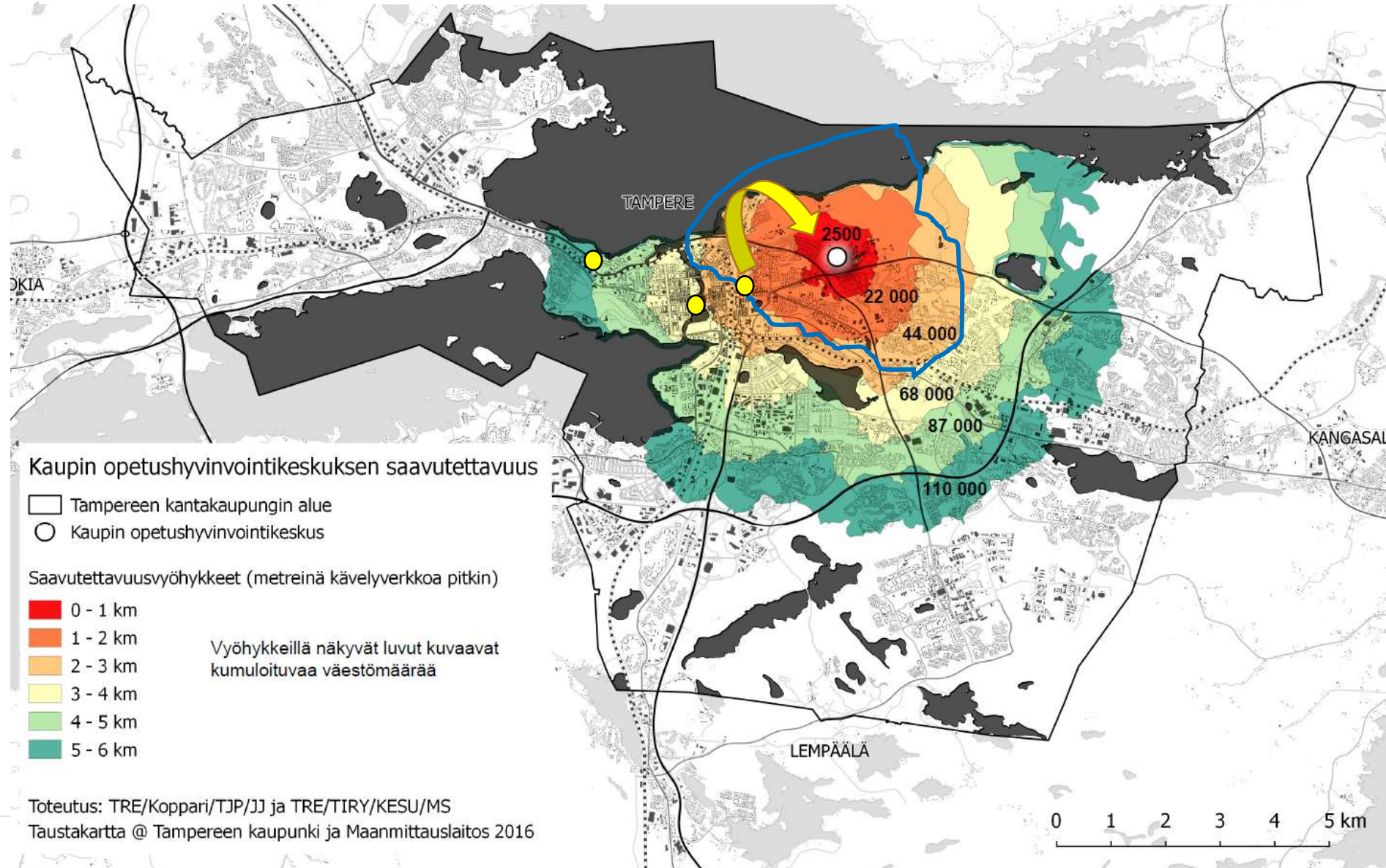
Today:

- 1) Trainee periods in Health Centres supervised by their GP:s
- 2) Sections in departments of the University hospital

-> Opportunities to take part in development in primary care

=> Better innovation enviroment in Kauppi Campus

AMOUNT OF INHABITANTS IN THE NEIGHBORHOOD



ALTERNATIVES FOR LOCATION

